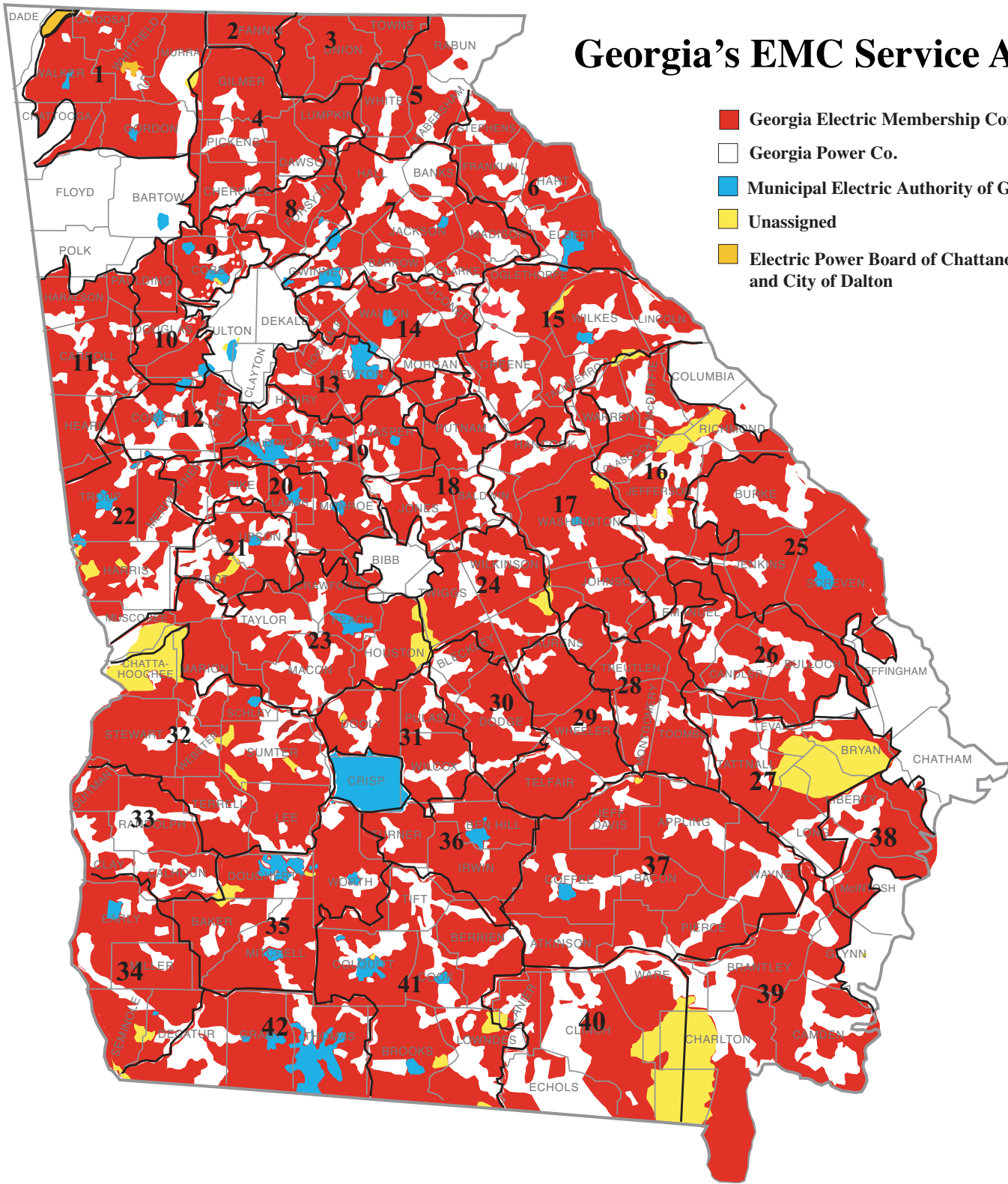


Georgia's EMC Service Areas

- Georgia Electric Membership Corporations
- Georgia Power Co.
- Municipal Electric Authority of Georgia
- Unassigned
- Electric Power Board of Chattanooga and City of Dalton



Electric Membership Corporations

- | | | | | | | |
|-------------------|-------------------|--------------------|--------------------|--------------------|-------------------|---------------|
| 1 North Georgia | 7 Jackson | 13 Snapping Shoals | 19 Central Georgia | 25 Planters | 31 Middle Georgia | 37 Satilla |
| 2 Tri-State | 8 Sawnee | 14 Walton | 20 Southern Rivers | 26 Excelsior | 32 Sumter | 38 Coastal |
| 3 Blue Ridge Mtn. | 9 Cobb | 15 Rayle | 21 Upton | 27 Canoochee | 33 Pataula | 39 Okefenokee |
| 4 Amicalola | 10 GreyStone | 16 Jefferson | 22 Diverse Power | 28 Altamaha | 34 Three Notch | 40 Slash Pine |
| 5 Habersham | 11 Carroll | 17 Washington | 23 Flint | 29 Little Ocmulgee | 35 Mitchell | 41 Colquitt |
| 6 Hart | 12 Coweta-Fayette | 18 Tri-County | 24 Oconee | 30 Ocmulgee | 36 Irwin | 42 Grady |